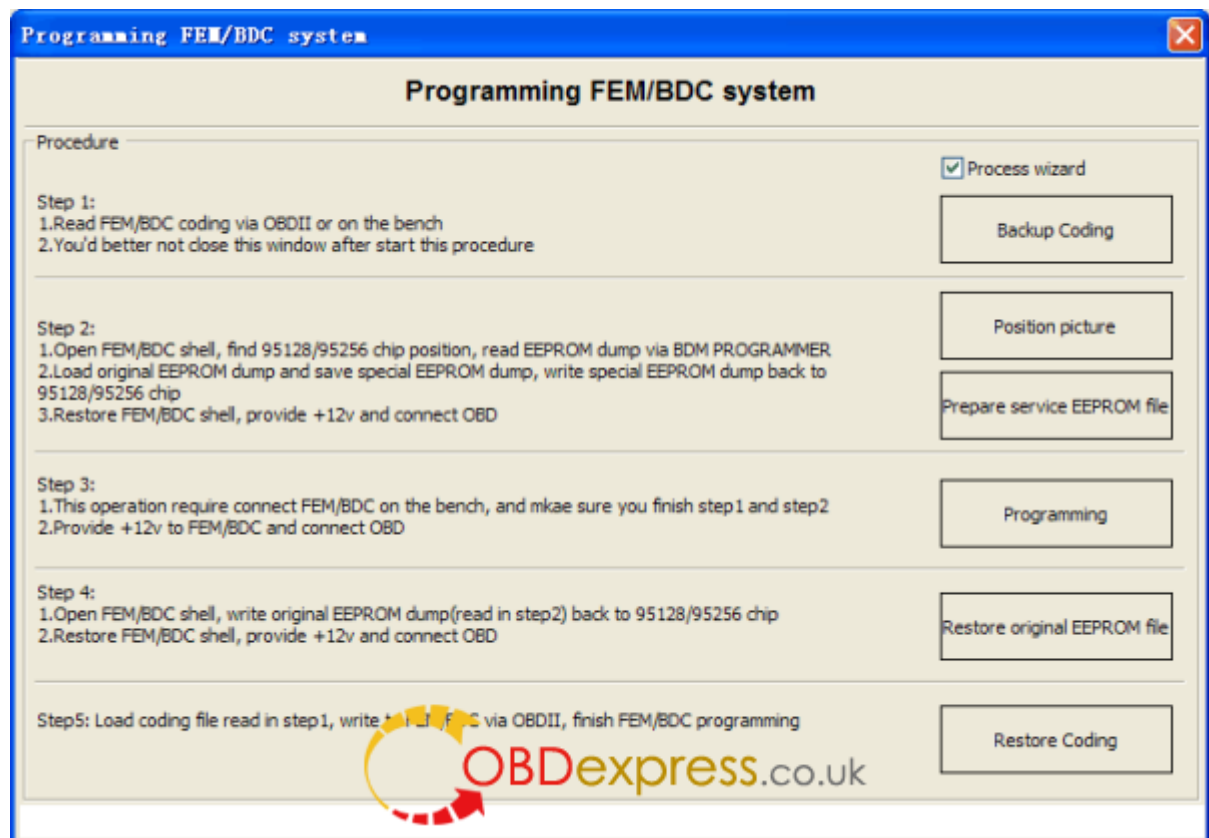


How To Use Xhorse VVDI2 Do Coding/Programming To BMW FEM BDC

www.obdexpress.co.uk

[Xhorse VVDI2](#) do coding/programming to BMW FEM BDC
MW FEM/BDC Coding/Programming with VVDI2 full kit 4.3.0



step 1:

1. read FEM/BDC coding on the bench
2. you'd better not close this window after starting this procedure

step 2:

1. open FEM/BDC shell, find out where the 95128/95256 chip is, read EEPROM dump via BDM programmer
2. load original EEPROM dump and save special EEPROM dump, write special EEPROM dump back to the 95128/95256 chip
3. restore FEM/BDC shell, provide -12v and connect it

step 3:

1. this operation requires connecting FEM/BDC on the bench, and make sure you finish step 1 and step 2

step 4:

1. open FEM/BDC shell, write original EEPROM dump (read step 2) back to the 95128/95256 chip
2. restore FEM/BDC shell and connect it

step 5:

loading coding file (read step 1), write to FEM/BDC , finish FEM/BDC programming

Attention please!!!

- You can directly backup/restore coding
- You have to pre-setup the FEM/BDC module before deleting/adding keys or resetting keys
- You'll be told other tools need to be used first to program the FEM/BDC system, then setup FEM/BDC via VVDI2. It happens when you do FEM/BDC key learning, and you don't have a working software version
- You'd better not close the VVDI2 interface when you pre-setup FEM/BDC
- You need do with 95128(FEM) or 95256(BDC) chip when pre-setup FEM/BDC

Note: there are two 8-pin chips; do not disassemble the wrong chip; better refer to the wiring diagram

- You must restore original EEPROM data, restore coding when pre-setup FEM/BDC. If you fail to restore coding or the remote cannot start or something wrong with the window (or other failures probably) after coding restore and FEM/BDC installation, please use other tools to do re-coding FEM/BDC
- Ask tech support @obdexpress.co.uk for help, if the replay sounds continuously after supplying power to the FEM/BDC. Usually, it needs programming.

<http://www.obdexpress.co.uk>

